



the total body drying system

EVOLVE
FULL BODY DRYER

Large-Print User Guide (Easy Read)

Thank you for choosing the **Evolve Full Body Dryer**

This guide is written in **clear, simple language** and **large print**, suitable for **older users and people with reduced vision or dexterity**.

Please read this guide **before installation or first use**.

Please read this user guide carefully as it contains important information for the safe installation, use and maintenance of the body dryer.

This user guide should be kept in a safe place for your future use. If the body dryer is transferred, ensure this user guide remains with the dryer.



Advice Line **0800 933 0020**



ADDITIONAL ELECTRICAL SAFETY

This appliance can be used by children aged from 8 years and above and persons with reduced physical, sensory or mental capabilities or lack of experience and knowledge if they have been given supervision or instruction concerning use of the appliance in a safe way and understand the hazards involved. Children should not play with the appliance. Cleaning and user maintenance should not be made by children without supervision.

If the supply cord is damaged, it must be replaced by the manufacturer, its service agent or similarly qualified persons in order to avoid a hazard.

The dryer must be installed with a fused switched spur.

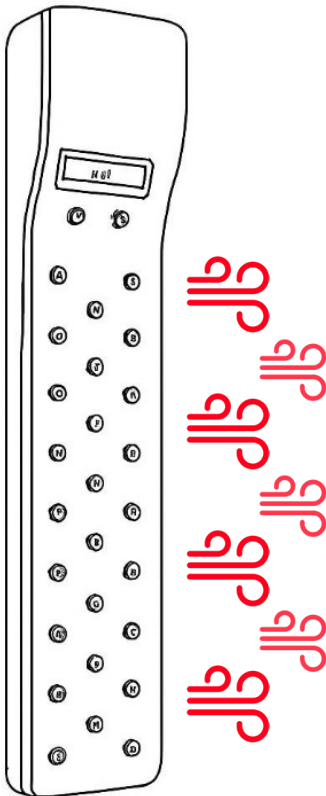
What this product does

The Evolve Full Body Dryer dries your body using **warm air**.

It helps you: - Dry safely without towels - Reduce slipping risks -
Keep skin comfortable and dry - Maintain dignity and independence.

It is suitable for:

Homes - Hotels - Assisted living environments - Accessible bathrooms



Size

190cm high x 20cm depth x 33cm width

Weight

19.7 Kg

4 heat settings

4 fan settings

Product Information

Product name: EVOLVE Body Dryer

Model: EVOLVE

technical specifications and eu standards

Model IDRY1

Operating voltage 220/240V

Amperage 13 amps

Output temperature 48-58 °C*

Unit size 190cm high x 20cm depth x 33cm width

Drying time 3 minutes

Speed function 2

Approval CE

EU directives 2006/95/EC Low Voltage Directive
2014/35/EU

IP rating IPX4

*dependent on room temperature. Output temperature can be 3-4°C above ambient.

Safety Features

The dryer includes:

Over-heating protection - Electrical leakage protection -

Automatic cool-down after switching off

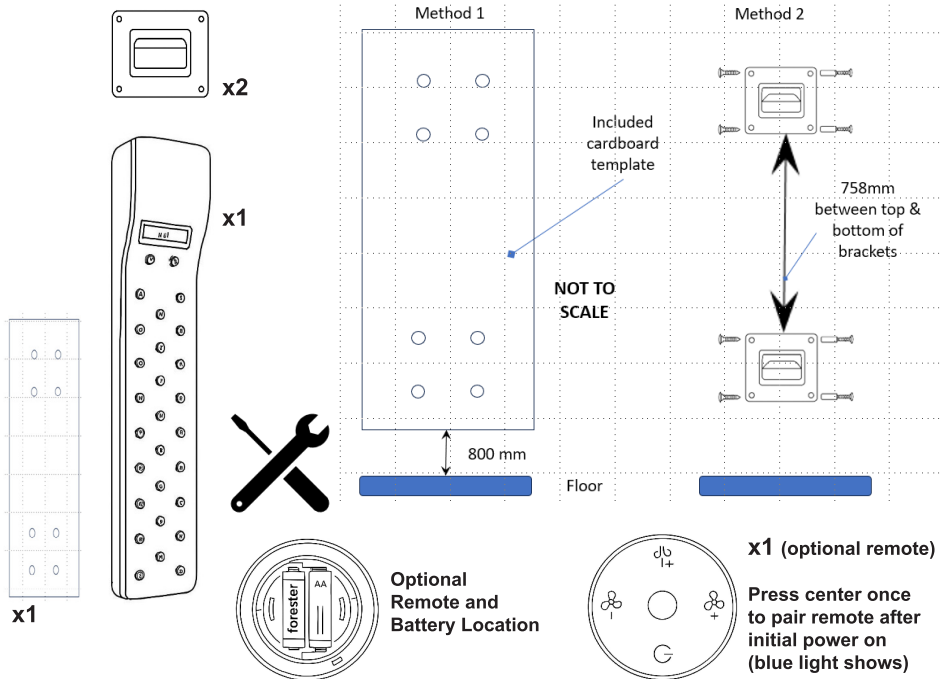
Installation

Step-by-step installation

1. Fix the **two metal wall brackets** securely to the wall.
2. Lift the dryer and **hook it onto the brackets**.
3. Ensure the unit is:
 - o Upright
 - o Firmly fixed
 - o Not able to move or fall

Image: kit of parts positions

Wall brackets and mounting



certified
electrician

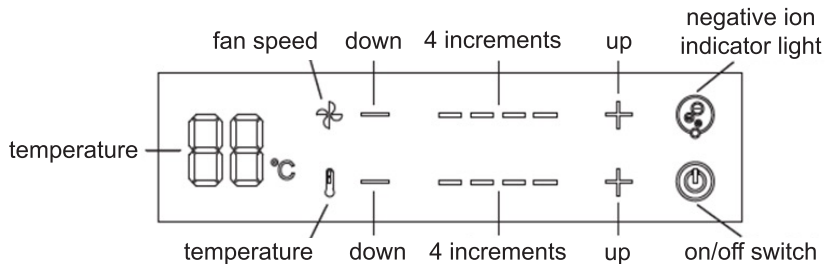
You must use a "part p" certified electrician to install this appliance who can self-certify their work as being compliant with the building regulations. Alternatively, you must notify the local authority who will inspect and may charge a fee.



Switching on the dryer

1. Plug the dryer into a **dedicated wall socket**.
2. The screen will light up.
3. Press the **ON / OFF button** once to start.

Image: Control panel with ON/OFF button highlighted



Using the control panel

The control panel is touch-sensitive and clearly labelled.

Main controls

- **ON / OFF** - Starts and stops the dryer
- **Temperature + / -** - Adjusts air warmth
- **Air speed + / -** - Adjusts airflow strength

Image: Control panel with buttons labelled

Automatic start programme (important)

When first switched on:

- Dryer starts **warm with gentle airflow**
- Air speed increases gradually
- After around **2 minutes**, it switches to normal use

This helps warm the air safely

If you press any button, the automatic programme stops and your chosen settings are used.

temperature

The iDry Body Dryer re-circulates warm air, so a change in space, for example, opening your shower door, will alter the ambient temperature.



Maximum running time

When first switched on:

- Maximum continuous use at highest setting: **10 minutes**
- Dryer will cool automatically after switching off

When not in use

- Switch off

guarantee

Your new body dryer is guaranteed against the cost of breakdown repairs for two years from the date of the original purchase.



What is covered?

- Repairs necessary as a result of faulty materials, defective components or manufacturing defect.
- Cost of functional replacement parts.
- The labour costs of an iDry approved repairer to carry out any repairs.

What is not covered?

- Accidental damage, misuse and abuse.
- External or appearance parts including remote, pvc remote connector, foot or legs.
- Repairs required as a result of unauthorised repair or inexperienced installation that fails to meet the requirements within this user manual.

Important notes

- The body dryer must be correctly installed, located and operated in accordance with the instructions in this user manual.



online
just visit
www.idry.me



phone
0800 933 0020



mail
mail the completed
registration form
(please see below)

We can provide further assistance you may need for your new **DRY** dryer. We also offer 3 or 5 years extended warranty and extended service packages. Contact us by email: hello@idry.me or freephone 0800 933 0020.



NOTES...

NOTES...



visit us online at
www.idry.me